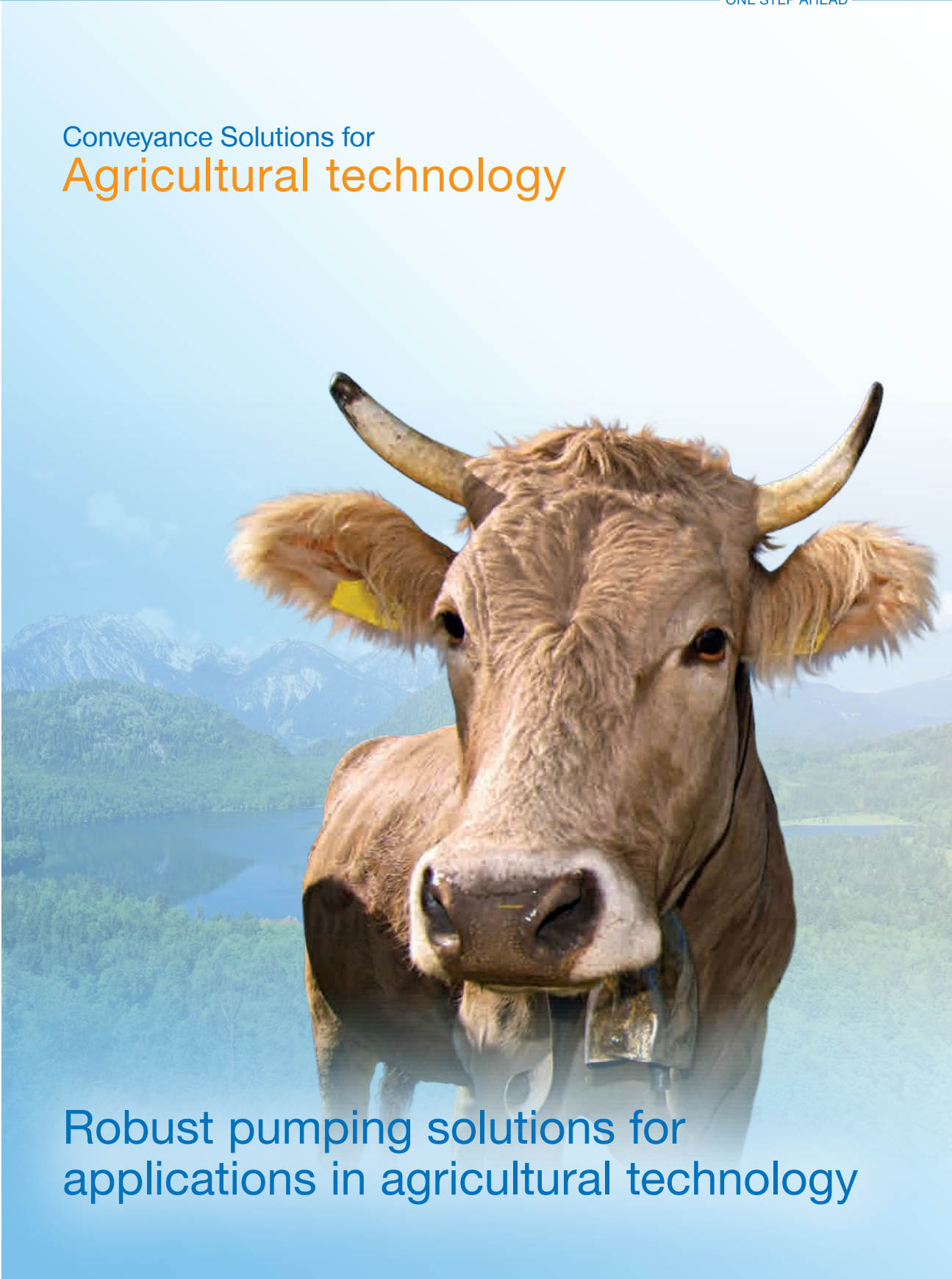




Conveyance Solutions for
Agricultural technology



Robust pumping solutions for
applications in agricultural technology

Who we are

Why WANGEN PUMPEN?

The name WANGEN PUMPEN originates from Wangen in the Allgäu region of Germany, which is the location of the company's head office and main production site. Wangen is in the most southerly part of Germany, where the three countries Austria, Switzerland, and Germany join at Lake Constance.

Made in Germany, used worldwide. Customers trust and rely on pumps made by Wangen Pumpen. It is a clear confirmation of our commitment to quality as the basis for long-term value.



“My WANGEN pump has been running for 35 years without a single repair. That is how pumps should be!”



Since the establishment of WANGEN PUMPEN in 1969, it has continued to expand from its beginnings as a small family business to a medium-sized company with a workforce of over 200 staff members.

Thanks to our consistent focus on the requirements of the market and our customers, our pumps are highly regarded at regional, national, and international levels.

Our quality recognition by our customers motivates us to retain and improve our company values every single day.



Headquarter building in Wangen, Germany

Agricultural

Applications

The following are typical pumping applications:

- Fertilizer
- Liquid manure, e.g. cow and chicken manure
- Fermenter substrates
- Sewage sludge
- Inorganic sludges
- Pomace
- Liquid feed

The ideal pump depends upon the specific customer requirements. WANGEN pumps can be driven by both PTO shaft as well as using an electrical, hydraulic or diesel motor. That is important especially in liquid manure spreading technology, as they can be used for stationary or mobile applications, e.g. on 2-wheel carts. Apart from the three-point linkage, assembly is directly possible on the liquid manure tank.



When used in the liquid feed area, WANGEN pumps ensure that all animals in the stall receive the correct and same amount of mixed feed mash according to the feed computer system by constant, uniform pump performance, irregardless of the distance of the trough. In this way, high standing times are made possible by using wear-resistant stators and rotors as well as optimised seal technology. The pumps are also non-rusting, and available in stainless steel designs.



WANGEN PUMPEN Agricultural technology

Application Examples

Feeding systems



WANGEN KL30-S used with a liquid feeding system

Liquid manure tanks



PTO pump on liquid manure tank / pump tank wagon

Umbilical systems



Umbilical system from a liquid manure tank with a pump from the WANGEN GL-series



WANGEN pumps in use

The right pump for each area of application

The following are typical pumping applications in agriculture:

- Umbilical systems
- Irrigating
- Loading, unloading, transfer pumping
- Filling
- Rinsing
- Distributing
- Sucking

For each respective area of use, the best possible and/or technically most appropriate pump and its model are selected. That means that you have optimally pumps in use which provide you with the highest possible benefit.

Especially in the field of agricultural technology, WANGEN pumps are synonymous with robust reliability. With our broad range of customised solutions for your exact requirements, we will be able to comply with all your needs.



WANGEN PUMPEN

Our Solutions

Our agriculture series consists of 5 pumps and are equipped with a cardan joint protected with a sleeve, which makes the pumps resistant to tangling and abrasion. The pump housing has an optimised flow, whereby solids are not able to accumulate and the pump remains free of blockages. Large inspection openings allow simple cleaning of the pump's interior.

PTO pump A

For spraying water, manure and thick viscous medium, such as liquid manure or sludge. Flow rate up to 160 m³/h (at 540 min⁻¹), differential pressure up to 16 bar.



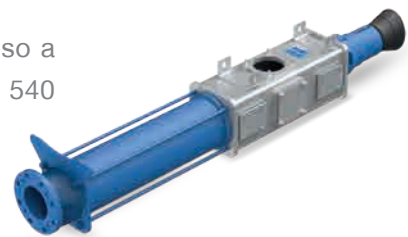
PTO pump GL-S

It can either be used as a stationary pump or mobile unit – attached to tank vehicle or the vehicle's chassis. Flow rate up to 120 m³/h (at 350 min⁻¹), differential pressure up to 16 bar.



PTO pump GL-F

Attached to tank wagons, tanker vehicles and umbilical systems, it is also a suitable medium for all kinds of properties. Flow rate up to 480 m³/h (at 540 min⁻¹), differential pressure up to 16 bar.



WANGEN PUMPEN

Our Solutions

Standard self-priming pumps KL-S

For pumping flowable thin sludge, excess sludge and mechanically thickened sludge up to 10%. Stator with funnel-shaped entrance for optimal filling of the pumping chamber. Flow rate up to 560 m³/h, differential pressure up to 48 bar.



Immersion pump KL-T

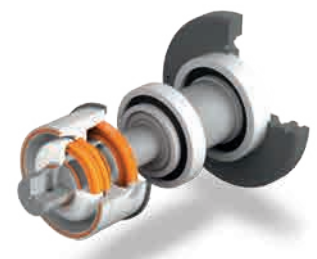
For pumping medium out of tanks and containers. Whatever material you may handle. Regardless if the material you handle is liquid, abrasive, chunky, sticky, or also highly viscous, it is gently conveyed and is forwarded without impairing the structure and quality. Flow rate up to 525 m³/h, differential pressure up to 12 bar.



Service and Spare Parts

All WANGEN spare parts comply with strict requirements in terms of functionality as well as durability and are manufactured in strict compliance with the WANGEN quality standard. Spare parts, such as rotors and stators are manufactured directly at our company. This guarantees first-class quality from the manufacturer and ensures the long service life of your pump.

Spare parts are located at our warehouse, which allows us to ship parts worldwide within a few business days. This means we can help you to reduce system downtime and maximize the operational functionality of your plant. The Wangen service team will be happy to assist you.





Online Newsletter

Subscribe now and be informed!

Go to www.wangen.com



Audited Quality

WANGEN PUMPEN quality management is certified to ISO 9001:2008.



Tested sustainability

WANGEN PUMPEN environmental management is certified to ISO 14001:2004.



Your contact:

Pumpenfabrik Wangen GmbH

Simoniusstrasse 17
88239 Wangen im Allgäu
Germany
www.wangen.com

Service hotline: +49 7522 997-997

Spare parts: +49 7522 997-896