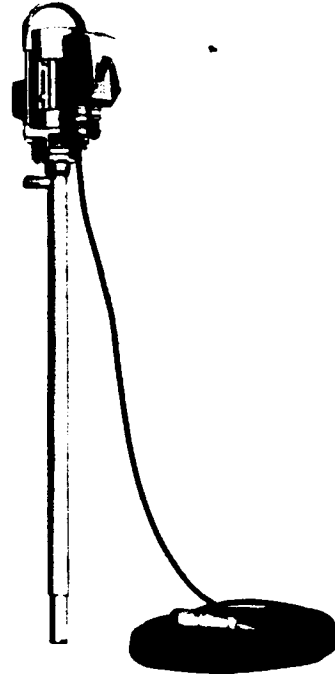
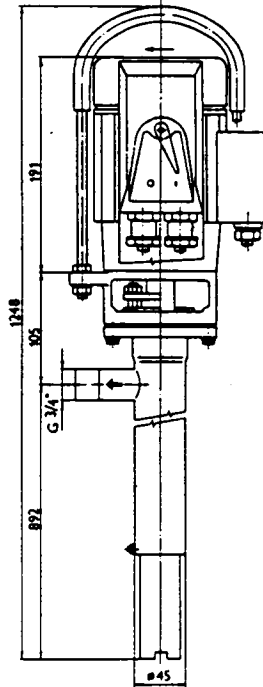


Portable vertical helical rotor pump

3/4" EQPV



Use of pump types according to pumped liquids

Basic technical data

Pumping set	3/4"-EQPV-10-6-GY		
Speed	RPM	1 370	890
Flowrate of pump	l/s	0.25	0.165
Discharge pressure of pump	bar	1.6	1.6
Flowrate of pump	l/s	0.2	0.11
Discharge pressure of pump — maximum	bar	6*)	4*)
Maximum temperature of the pumped liquid	°C	50	
Diameter of delivery piping	G 3/4"		
Type of electric motor		4AP-71-4	4AP-71-6
Output	kW	0.37	0.25
Voltage	V	380 (415)	380 (415)
Frequency	Hz	50	50
Weight of the pump without accessories	kg	13.1	
Weight of the pump including accessories (switch, plug, electrical cord)	kg	17.7	

Pump with motor of types	Pumped liquid	Discharge pressure bar
4AP-71-4	Non-aggressive liquids of a viscosity ranging from 1 to 2 300 mm ² .s ⁻¹ Packing: soft cord	1.6
	Aggressive liquids of a viscosity ranging from 1 to 2 300 mm ² .s ⁻¹ Packing: sealing ring gufero	
4AP-71-6	Dense viscous liquids and pasty substances of consistency index 2 and penetration of 260—300/25 °C Packing: soft cord or sealing ring gufero	1.6

We reserve the right to alter specifications and illustration without prior notice.

The above values of output apply to pure water at the temperature of 20 °C.

The choice of speed depends on the type and physical properties of the pumped liquid and on the required outputs of the pump.

* The pump may be operated at maximum discharge pressure only exceptionally, after an agreement with the manufacturer.

Application

The helical rotor vertical pump 3/4"-EQPV-10-6 is destined for pumping liquids from barrels, tanks, pits and others.

The pump may be used with advantage in pharmaceutical, food and chemical industries for the transport of liquids and diluted as well as viscous substances, including the aggressive ones, such as pastes, creams, syrups, beer, wine, milk products, lyes and others up to the maximum temperature of 50 °C.

Description

The pump is positive displacement rotating, helical rotor, arranged vertically under the electromotor. The working part of the pump is submerged in the pumped liquid, so that an instantaneous aspiration is always guaranteed.

The design of the pump makes possible to install it freely on the cover of the barrel or tank. The smallest necessary diameter of the hole in the cover of the tank is 50 mm, the depth of the tank 850 mm.

The packing may be selected individually according to the properties of the pumped liquid and operational conditions (see Table 2). It may be a soft cord or sealing ring gufero.

The pump is provided with three-phase asynchronous electric motor.

Material

Metal parts of the hydraulic part of the pump which enter into contact with the pumped liquid are made of corrosion-resistant steel.

The elastic inserts of the stator as well as the inserts of the articulated joints are made of moulded rubber or of rubber used in the food industry and meeting the health regulations. The lantern is made of grey cast iron.

Accessories

Pumping set can be supplied with accessories in the following scope:

- circuit breaker — it serves as a switch as well
- connecting cable CGSG or Flexo of the maximum length 16 metres
- plug
- socket.

Execution of the packing

I stuffing box	K Carrier
II sealing ring Gufero	L Circuit breaker of the motor
A Stator	M Handle
B Helical screw	N Electric motor
C Discharge body	O Connecting shaft
E Stuffing box	P Bush of sealing ring
F Sealing ring	R Sealing ring
G Packing body	S Pump body
H Ring	T Ring
J Flange of seal	U Coupling

